

WT 4-2

TNA1

CMD1



↓2.5X

BNA6

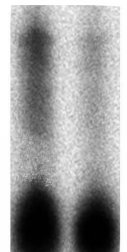
CMD1



↓2.5X

YKR049C

CMD1



↓3.5X

Supplemental Figure 3 Materials and Methods

S1 nuclease protection assays were performed essentially as described by Bhoite and Stillman, 1998.

Supplemental Figure 3 Legend

Supplemental Figure 3. Impact of *rsc4* BD^{Ts-} mutations on gene expression

S1 nuclease protection analysis comparing RNA levels in the *rsc4-2* mutant (4-2) to wild-type (WT). *CMD1* is shown as a loading control and shows no change in the *rsc4-2* microarrays. The fold change was quantified using ImageQuant.